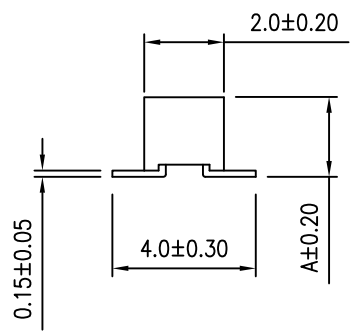
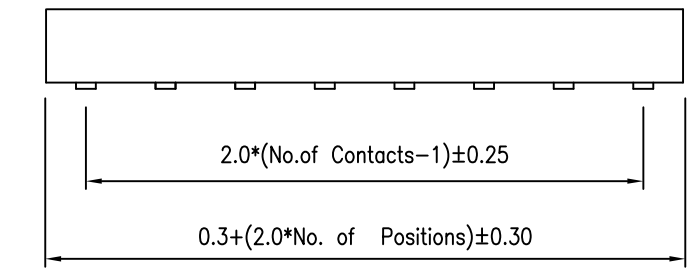
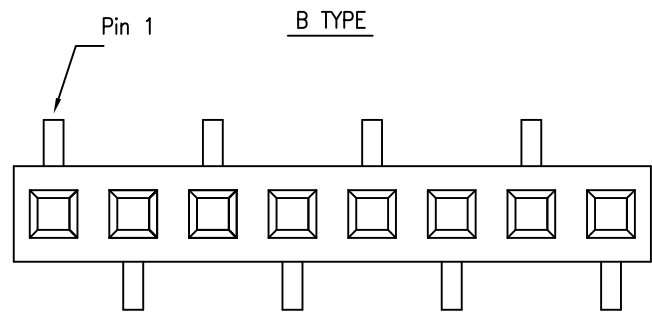
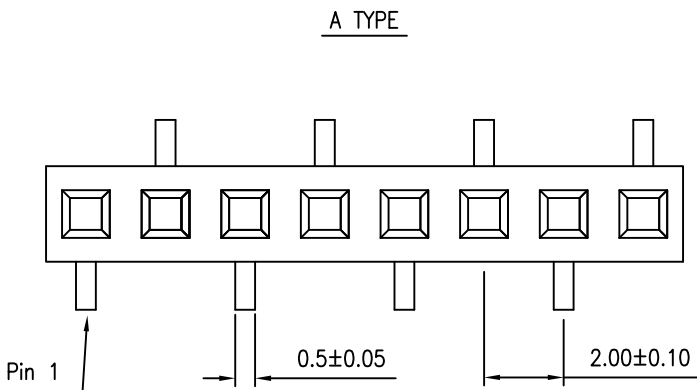


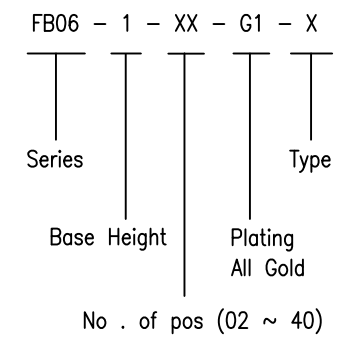
REV	ECN NO.	APP.	DATE
A	NEW DESIGN		



SPECIFICATION

- \* Current Rating: 2 A
- \* Withstanding Voltage: 500 VAC ( 1 min. )
- \* Insulation Resistance: 1000 Megohms MIN.
- \* Contact Resistance: 30 Milliohms MAX.
- \* Operating Temperature: -40°C to +105°C

ORDER INFORMATION

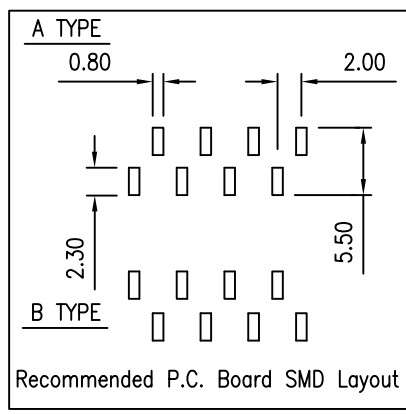


MATERIAL

- \* Contact: Phosphor Bronze
- \* Insulator: PA6T & 30% G.F.
- \* Plating: All Gold

Base Height

H	A
1	2.20



(주)신화테크 SHINHWA TECH CO.,LTD  
TEL : 031-451-9441 FAX : 031-451-9444

0.0±	SCALE:	TITLE:	PART NO:
0.00±	UNIT:	2.00MM Female Header	APP BY:
0.000±	MM	Single Row SMD (H:2.2)	CHK BY:
		MATL: PA6T + 30% G.F.	DR BY:
		DWG. NO. FB06	